



ДЕМЛИНК

since 1992

ООО «ДЕМЛИНК»
+7 (495) 129-21-00
+7 (495) 252-00-32
info@demlink.ru
demlink.ru

АВИА И Ж/Д БИЛЕТЫ • ГОСТИНИЦЫ • ВИЗЫ • ТРАНСПОРТ • ВЫСТАВКИ • МЕРОПРИЯТИЯ • КОНФЕРЕНЦИИ • VIP – ОБСЛУЖИВАНИЕ • ОТДЫХ

INTERFABRIC–2025. AUTUMN

**General industry exhibition of
textile and light industry
26 August – 28 August 2025**

**INTERNATIONAL EXHIBITION CENTRE
"CROCUS EXPO", Moscow, Russia**



Visa to Russia

INTERFABRIC–2025.

Autumn General industry textile exhibition

26 August – 28 August 2025, “Crocus Expo”, Moscow, Russia

For your stay in Russia you need a VISA.

Please do not forget to apply for it to the Russian Consulate early enough.

Information on documents and registration procedure <https://evisa.kdmid.ru/>

If you have any questions please do not hesitate to contact DEMLINK

Hotel booking, transfers

Office 1, 1st Smolensky Pereulok 24,
Moscow, 121099, Russia
Tel: +7 (495) 129-21-00
Fax: +7 (495) 252-00-32
incoming@demlink.ru
www.demlink.ru

Visa support -

1st Smolensky Pereulok 24,
Moscow, 121099, Russia
Tel: +7 (495) 129-21-00
Fax: +7 (495) 252-00-32
visa@demlink.ru
www.demlink.ru

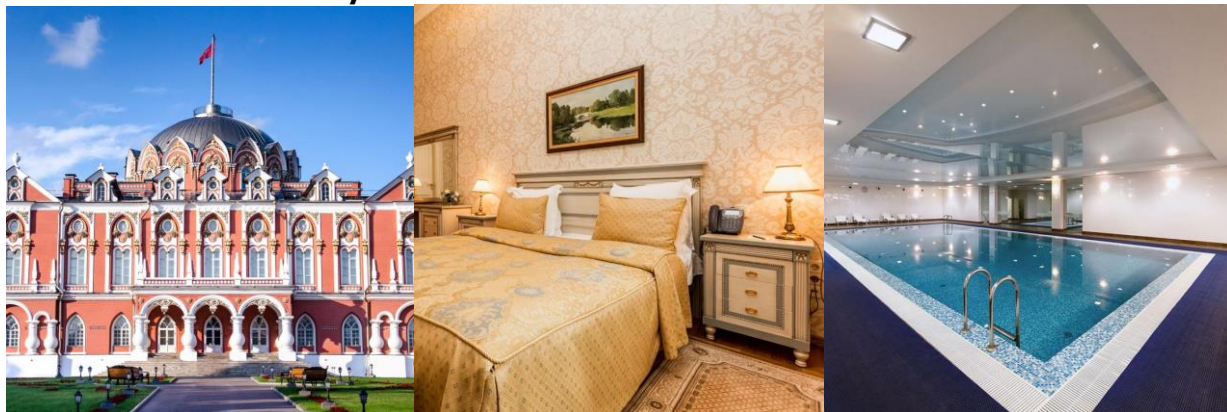
SERVICE FOR PARTICIPANTS AND VISITORS OF THE EXHIBITION

INTERFABRIC–2025. Autumn 18-th International Exhibition of Fabrics and Textile Materials

26 August – 26 August 2025, “Crocus Expo”, Moscow, Russia

Hotel Petroff Palace | 5 ★

10.93 km from Crocus City Hall



Hotel Petroff Palace - Moscow, City Moscow, 40 Leningradsky avenu

Airports: Sheremetyevo - 21,94 km, Vnukovo - 27,78 km, Ostafyevo - 32,38 km, International airport Zhukovsky - 43,8 km, Zhukovsky - 43,91 km

Railway station: Savelovsky - 2,25 km, Belorussky - 2,55 km, Rizhsky - 5,02 km

Subway: Petrovsky Park - 0,41 km, Dinamo - 0,52 km, CSKA - 1,26 km

Attractions: Petrovsky Palace - 0,06 km, Petrovsky Park - 0,08 km, Annunciation of Holy Mother Church - 0,3 km, Dynamo Stadium - 0,52 km, CSKA Sports Complex - 0,87 km

Radisson Collection Hotel Moscow | 5 ★

13.82 km from Crocus City Hall



Radisson Collection Hotel - Moscow, Kutuzovsky Prospekt, 2/1, building 1

Airports: Vnukovo - 25 km, Sheremetyevo - 26,54 km, Ostafyevo - 27,87 km, International Airport Zhukovsky - 40,56 km, Zhukovsky - 40,65 km
Railway Station: Kievskiy - 0,99 km, Belorussky - 2,92 km, Savelovsky - 4,95 km

Subway: Kievskaya - 0,87 km

Attractions:

World Trade Center - 0,65 km, Russian Federation Government House – White House - 0,66 km, «Red Presnya» Park - 0,99 km, US Embassy - 1 km, F.I. Shalyapin's House-Museum - 1,24 km

Arbat Stars (ex. Marriott Moscow New Arbat) | 5 ★

14.48 km from Crocus City Hall



Arbat Stars - Moscow, Novy Arbat, 32

Airports: Vnukovo - 25,85 km, Sheremetyevo - 26,7 km, Ostafyevo - 28,21 km, International Airport Zhukovsky - 39,86 km, Zhukovsky - 39,96 km

Railway Station: Kievskiyii – 1,53 km, Belorussky - 2,57 km, Paveletsky - 4,52 km

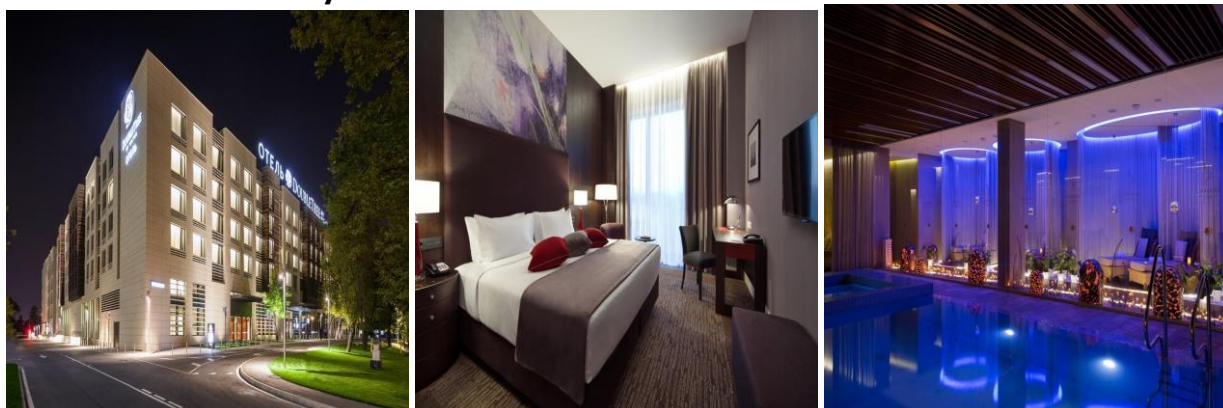
Subway: Smolenskaya - 0,63 km, Krasnopresnenskaya - 0,81 km

Attractions:

US Embassy - 0,3 km, House of I.S. Ostroukhov in Trubniki - 0,4 km, F.I. Shalyapin's House-Museum - 0,4 km, Russian Federation Government House – White House - 0,48 km, State Film Actor Theater - 0,52 km

Hotel DoubleTree by Hilton Hotel Moscow - Marina | 4 ★

6.26 km from Crocus City Hall



Hotel DoubleTree by Hilton Hotel Moscow - Marina - Moscow, City Moscow, Building 1, 39 Leningradskoye highway

Airports: Sheremetyevo - 16,32 km, Vnukovo - 29,19 km, Ostafyevo - 36,75 km, International airport Zhukovsky - 49,83 km, Zhukovsky - 49,93 km

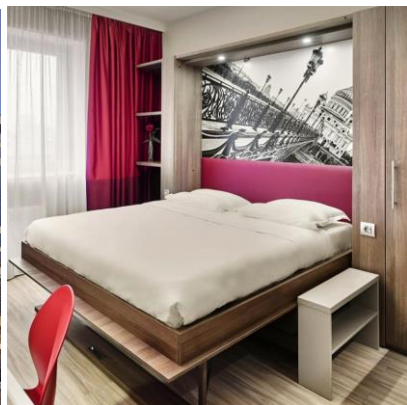
Railway station: Khimki - 7,2 km, Savelovsky - 7,76 km, Belorussky - 8,67 km

Subway: Vodny Stadion - 0,77 km, Baltiyskaya - 1,07 km, Voykovskaya - 1,75 km

Attractions: Hunting and Fishing Museum - 0,76 km, Porkovskoye-Streshnevo-Glebovo Estate - 1 km, Pokrovskoye-Streshnevo Park - 1,06 km, Friendship Park - 2,24 km, Otkrytie Arena - 3,24 km

Hotel Adagio Moscow Kievskaya | 4 ★

14.21 km from Crocus City Hall



Hotel Adagio Moscow Kievskaya - Moscow, City Moscow, 2 Kievskaya street

Airports: Vnukovo - 24,24 km, Ostafyevo - 26,94 km, Sheremetyevo - 27,33 km, International airport Zhukovsky - 40,27 km, Zhukovsky - 40,36 km

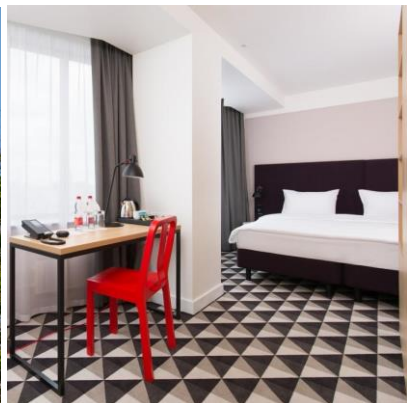
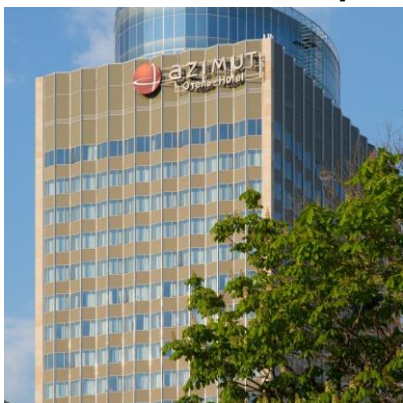
Railway station: Kievsky - 0,22 km, Belorussky - 3,86 km, Paveletsky - 5,05 km

Subway: Kievskaya - 0,26 km, Kievskaya - 0,26 km, Kievskaya - 0,26 km

Attractions: Moscow World Trade Centre - 1,35 km, Expocentre Exhibition Complex on Krasnaya Presnya - 1,36 km, Ministry of Foreign Affairs of Russia - 1,42 km, Government House of the Russian Federation - the White House - 1,51 km, Krasnaya Presnya Park - 1,52 km

Azimut Smolenskaya Moscow | 4 ★

14.89 km from Crocus City Hall



Azimut Smolenskaya- Moscow, Smolenskaya st., 8

Airports: Vnukovo - 25,31 km, Sheremetyevo - 27,41 km, Ostafyevo - 27,43 km, International Airport Zhukovsky - 39,48 km, Zhukovsky - 39,58 km

Railway Station: Kievskiy - 1 km, Belorussky - 3,35 km, Paveletsky - 4,14 km

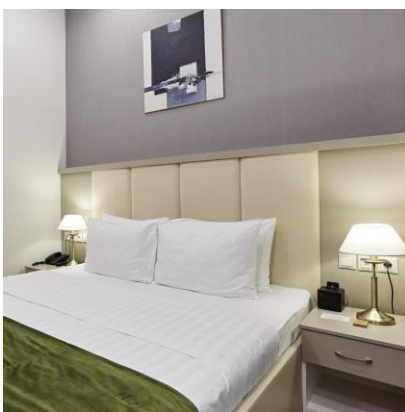
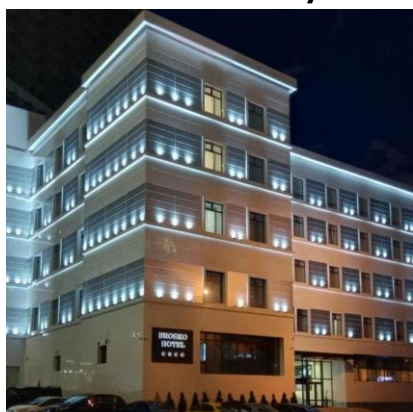
Subway: Smolenskaya - 0,29 km, Kievskaya - 0,9 km

Attractions:

Ministry of Foreign Affairs of the Russian Federation - 0,27 km, Theater named after E.Vakhtangov - 0,82 km, Art Gallery of Zurab Tsereteli - 1,07 km, House of I.S. Ostroukhov in Trubniki - 1,03 km, Russian Federation Government House - White House - 1,07 km

Brosko | 4 ★

26 km from Crocus City Hall



Brosko - City Moscow, building 2, 21 Novy Arbat street

Airports: Vnukovo - 25,97 km, Sheremetyevo - 27,01 km, Ostafyevo - 28,08 km, Zhukovsky - 39,58 km

Railway station: Kievsky - 1,63 km, Belorussky - 2,78 km, Paveletsky - 4,14 km

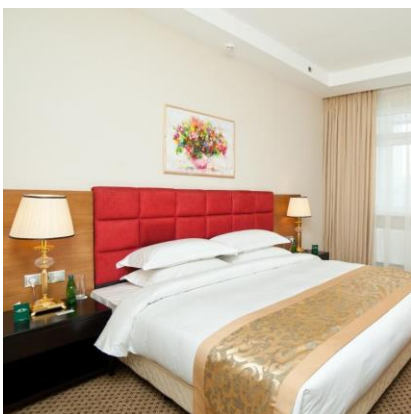
Subway: Smolenskaya - 0,43 km, Smolenskaya - 0,43 km, Arbatskaya - 0,97 km

Attractions:

Ostroukhv House in Trubniki - 0,35 km, Tsvetaeva Museum - 0,38 km, The Vakhtangov Theatre - 0,4 km, Shalyapin House-Museum - 0,58 km, Kinoakter State Theatre - 0,59 km

Greenwood | 4 ★

12 km from Crocus City Hall



Greenwood - City Moscow, building 24, Greenwood business-center, 69th km MKAD

Airports: Sheremetyevo - 11,37 km, Vnukovo - 31,45 km, Ostafyevo - 41,52 km, Zhukovsky - 56,36 km

Railway station: Khimki - 3,66 km, Pavshino - 7,63 km, Krasnogorskaya - 9,11 km

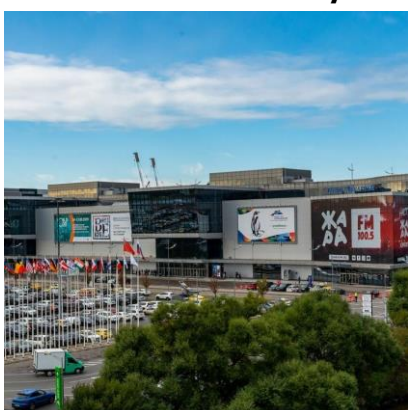
Subway: Planernaya - 2,16 km, Skhodnenskaya - 3,08 km, Pyatnitskoye shosse - 3,81 km

Attractions:

Monument to Fighter Aircraft La-7 - 2,57 km, St.Mother of Vladimir Church - 2,63 km, Bratsevo Estate - 2,68 km, Severnoe Tushino Park - 2,89 km, Nash Dom Drama Theatre - 2,91 km

Aquarium Hotel | 3 ★

0.53 km from Crocus City Hall



Aquarium Hotel - Moscow region, City Krasnogorsk, 20 Mezhdunarodnaya street

Airports: Sheremetyevo - 16,29 km, Vnukovo - 26,46 km, Ostafyevo - 36,94 km, International airport Zhukovsky - 54,4 km, Zhukovsky - 54,5 km

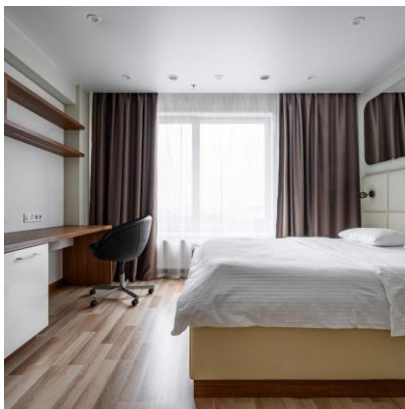
Railway station: Pavshino - 3,45 km, Krasnogorskaya - 5,54 km, Khimki - 8,32 km

Subway: Myakinino - 0,4 km, Volokolamskaya - 0,98 km, Mitino - 2,67 km

Attractions: Crocus City Hall - 0,53 km, Crocus Expo International Exhibition Centre - 0,53 km, Shezh.Kom Sports Complex - 2,17 km, Bratsevo Estate - 2,32 km, Otkrytie Arena - 3,35 km

Ye's Mitino Apart-Hotel | 3 ★

2.21 km from Crocus City Hall



Ye's Mitino Apart-Hotel - Moscow, City Moscow, 16 Mitinskaya street

Airports: Sheremetyevo - 14,87 km, Vnukovo - 27,7 km, Ostafyevo - 38,7 km, International airport Zhukovsky - 56,15 km, Zhukovsky - 56,25 km

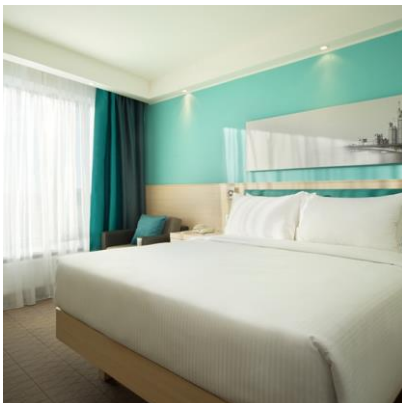
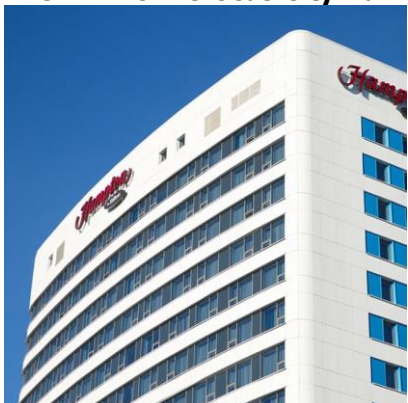
Railway station: Pavshino - 3,66 km, Krasnogorskaya - 5,27 km, Khimki - 7,59 km

Subway: Mitino - 0,82 км, Volokolamskaya - 0,92 km, Pyatnitskoye shosse - 1,9 km

Attractions: Bratsevo Estate - 1,72 km, Crocus City Hall - 2,21 km, Crocus Expo International Exhibition Centre - 2,21 km, Shezh.Kom Sports Complex - 3,06 km, German Anti-fascist Memorial Museum - 4,06 km

Hotel Hampton by Hilton Moscow Strogino | 3 ★

2.28 km from Crocus City Hall



Hotel Hampton by Hilton Moscow Strogino - Moscow, City Moscow, 20 Kulakov street

Airports: Sheremetyevo - 19,02 km, Vnukovo - 23,85 km, Ostafyevo - 34,25 km, International airport Zhukovsky - 52,93 km, Zhukovsky - 53,02 km

Railway station: Pavshino - 3,42 km, Krasnogorskaya - 5,49 km, Nemchinovka - 9,81 km

Subway: Strogino - 0,79 km, Myakinino - 2,47 km, Spartak - 3,25 km

Attractions: Shezh.Kom Sports Complex - 2,1 km, Crocus City Hall - 2,28 km, Crocus Expo International Exhibition Centre - 2,28 km, Otkrytie Arena - 3,52 km, Bratsevo Estate - 5,03 km

Please note: if payment is made via bank transfer, the bank commission should be paid by the customer

Transfer

Transfer „Airport – Hotel” or „Hotel – Airport”(one way) individual – from €40 (Auto, 3 pax)

Transfer „Airport – Hotel” or „Hotel – Airport”(one way) group – from €70 (minibus, 5 pax)

Transfer “Hotel – Moscow City, Afimall or Moscow City, Afimall – Hotel (one way) – from €40 (Auto, 3 pax)

Transfer “Hotel – Moscow City, Afimall” or “Moscow City, Afimall – Hotel” (one way) – from €70 (minibus, 5 pax)

Should you have any questions please do not hesitate to contact DEMLINK

Hotel booking, transfers

Office 1, 1st Smolensky Pereulok 24,
Moscow, 121099, Russia
Tel: +7 (495) 129-21-00

incoming@demlink.ru
www.demlink.ru

Visa support – Irek Murtazin

1st Smolensky Pereulok 24,
Moscow, 121099, Russia
Tel: +7 (495) 129-21-00

Irek.Murtazin@demlink.ru
www.demlink.ru

FORM 5.1

INTERFABRIC–2025. Autumn 18-th International Exhibition of Fabrics and Textile Materials 26 August – 26 August 2025, “Crocus Expo”, Moscow, Russia

VISA INVITATION

I need (mark the required visa, see the above page)

1. Business visa

1. Tourist visa

Important: The invitation will be issued from Demlink to all applicants with the following personal data provided as required. Inaccurate information may cause delay or failure of invitation issue. Therefore, please type or write in print letters clearly and correctly. When you need an invitation for more than one person, please make a photocopy of this form and fill it in the same manner.

Surname:

First name:

Citizenship:

Date of Birth:

Passport No.

Sex:

Date of Arrival:

Date of Departure:

Time of Arrival

Flight No.:

Exhibition/Conference/Date:

Company Name:

Address:

Job Title:

Tel. No.

Contact

Fax No.

Person:

E-mail:

Consulate outside of Russia at which you are going to apply for visa

I hereby request an invitation

Date: _____ Signature: _____

SERVICE FOR EXHIBITORS AND VISITORS OF THE EXHIBITION

HOTEL ACCOMMODATION
TRANSFERS FROM AND TO AIRPORTS/ RAILWAY STATIONS
VISA SUPPORT
AIR/TRAIN TICKETS
EXCURSIONS
VIP SERVICE AT AIRPORT

We are glad to offer special hotel rates for participants and visitors
 For guaranteed reservations, please send room reservation requests in advance. It is necessary to specify in the order : “For participants “INTERFABRIC–2024”

Please note: if payment is made via bank transfer, the bank commission should be paid by the customer

FORM 5.2

AGREEMENT - ORDER FOR HOTEL ACCOMMODATION, TRANSFER & BOARD

Exhibition	INTERFABRIC–2025. Autumn 18-th International Exhibition of Fabrics and Textile Materials 26 August – 26 August 2025, “Crocus Expo”, Moscow, Russia		
Company			
		E-mail:	
Phone		Fax	
Person to contact			

HOTEL				
Please note the hotel's name from list				
HOTEL				
Please note hotel's name not from list if you wish to book another one				
Date of arrival	Time of arrival	Single rooms Names	Date of departure	Time of departure

Date of arrival	Time of arrival	Double rooms Names	Date of departure	Time of departure
		1. _____		
		2. _____		
		1. _____		
		2. _____		
		1. _____		
		2. _____		
<i>Form of payment (please remark)</i>		Prepayment by credit card or bank transfer		

If you need a transfer to the hotel from the airport or railway station, or a return transfer, please fill out the following form.

The cost of the transfer is fixed and will be calculated depending on the place of delivery, traffic and car class.

If you need to be met at the airport or railway station please fill in enclosed form.

Railway station or airport name				
Flight / train № arrival	From	Arrival date	Arrival time	Number of persons
Flight / train № departure	To	Departure date	Departure time	Number of persons

The driver with the inscription _____ will be waiting for you in the arrival hall (at the airport) or by the locomotive (in the railway station)